

SUNLITE SUITE 3

The 3rd generation of our DMX software suite is now available. Sunlite Suite 3 offers exciting new features like: new GUI, new cycle window, new 3D visualizer...



PAGES



EDITOR



TIMELINES



CYCLES



PALETTES



FANNING



SUBMASTERS



CONSOLE



EASY REMOTE



3D VISUALIZER



AUDIO ANALYSIS



FIXTURES LIBRARY

Available on

SUNLITE PACKAGES

	SUNLITE-BC	SUNLITE-EC	SUNLITE-FC	SUNLITE-RC
Live channels	256 (512*)	1024 (2048*)	1536 (2048*)	2048 (4096*)
ArtNet universes	option*	option*	2*	4*
Stand Alone channels	128 (512*)	512 (2048*)	512 (2048*)	512 (2048*)
Sunlite Suite 2 (PC)	express**	express**	full	full
Sunlite Suite 3 (PC)	express***	express***	full	full
RDM	option*	✓	✓	✓
ESA2 (PC, Mac)	option*	✓	✓	✓
Ethernet		✓	✓	✓
USB	Type-C	Type-C	B	B
Dry contact ports (SA)		up to 16*	up to 8*	up to 16*
Clock/Calendar triggers (SA)		option*	option*	option*
Clock/Calendar triggers (LIVE)		option*	✓	✓



*DMX channels extensions, Art-Net universes, full software mode, optional software can be purchased online at DMXSoft.com
 ** Sunlite Suite 2 Express mode: limited 3D, no EasyShow, no timecode, no time triggers
 *** Sunlite Suite 3 Express mode: no audio, no video, no timecode, no time triggers

NEC
NICOLAUDIE GROUP

Copyright © 2021 - Nicolaudie Group. All rights reserved. All brands and product names are registered trademarks and the property of their respective owners. Specifications are subject to change without notice. Images and illustrations may not always match contents.

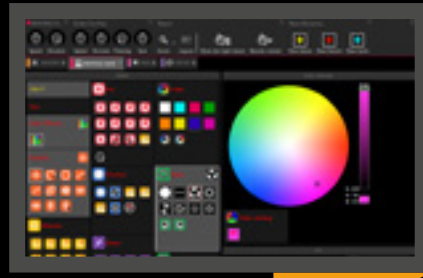
sunlite
www.sunlitepro.com

Available on

DMX LIGHTING SOFTWARE SUNLITE SUITE 3



sunlite



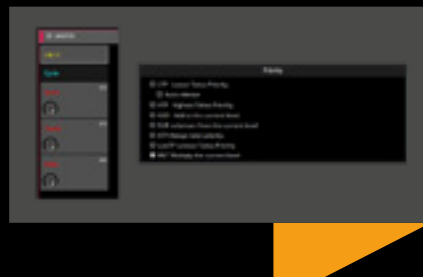
PAGES

The unique page concept has been at the heart of Sunlite since the very first product over 15 years ago. Each lighting fixture type has its own page which is built automatically depending on the fixture personality (SSL2 profile). Quick access switches are created to call presets such as color and gobo. dynamic moving and color changing effects are automatically built. XY and color mixing components allow for quick control of your lighting fixtures, without the need to program anything!



EDITOR

The button editor is your lighting design toolbox. Here is where the lighting programming is made. Lighting fixtures can be controlled with channel faders or using the preset window for quick and easy access to presets such as pan/tilt and color mixing. Scenes can be built with one of the available tools including EasyStep, EasyTime, DMX Input Recorder and the Followspot Calibrator.



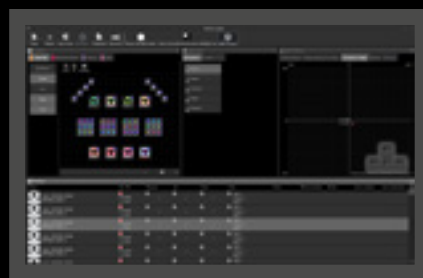
SUBMASTERS

New to Suite 3 - setting the new Multiply option on a Switch allows for Submaster dimmers to be created. When this option is set, the value of channels used in the Switch will be multiplied with the current DMX level.



CONSOLE

The console is Sunlite's remote control hub. Load up a design and link a MIDI, DMX or EasyRemote controller with almost everything in Sunlite Suite 2. The console can be used to trigger scenes, change the dimmer, speed, size and phase of a scene, control Pan/Tilt, set palettes and more.

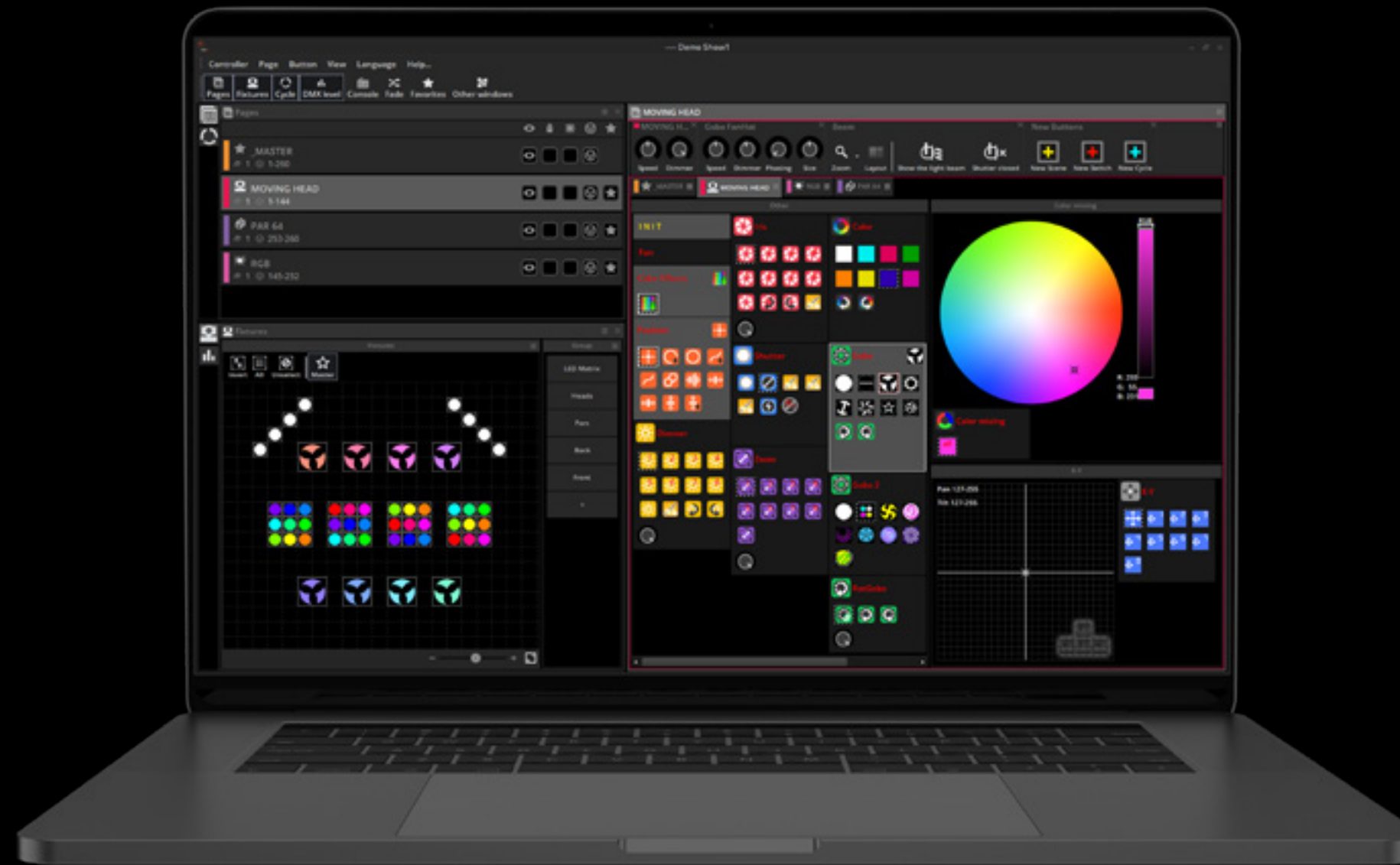


PALETTES

Palettes are available for positions, colors, beams or any other channel. You can save a channel value into a palette and then use the same palette in many different scenes. If you need to update the position or color of a fixture, simply update the palette and all the corresponding scenes will be updated automatically.

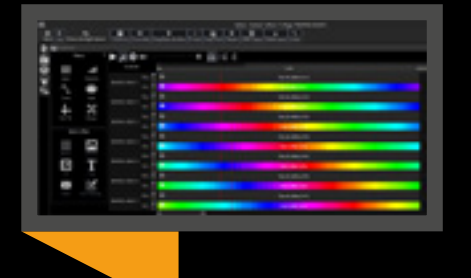
REFRESHED USER INTERFACE

We've listened to customer feedback over the past few years and have created a brand new graphical interface which is more comfortable to use in dark environments and gives quicker access to commonly used functions. The Suite 3 graphics include high resolution icons, the return of the menu bar and more zoom options allowing optimisation for touch screens.



TIMELINES

Easily create stunning effects with the EasyTime editor. Drag and drop color mixing, Pan/Tilt, chaser, wave and gradient effects. The matrix effects can be placed onto a virtual canvas called a RECT. All effects on a RECT are applied to the lighting fixtures underneath which makes this the perfect tool for pixel mapping. The matrix effects include picture, video and text mapping.



CYCLES

A Cycle consists of scene and switch buttons which can be viewed as a cue-list or on a timeline. Cycles can be recorded in real-time, or scenes can be dropped onto the timeline. Within a Cycle, scenes can be triggered by time, by a GO button, or synchronised with MIDI Time Code. New to Suite 3 - synchronize Audio and Video with your scenes and automate the dimmer, speed, size and phase to integrate a full multimedia show with ease.



FANNING

Position the beams of fixtures into a fan pattern using the new fanning curves tool.



EASY REMOTE

Take full control of your lighting from your smartphone or tablet, whether it is to position your lighting on the stage or to design a simple user interface for a bar owner. Easy Remote allows you to remotely control Sunlite Suite 2 over WiFi from your iPhone, iPad or Android device. The Easy Remote app is available for free and can be used on many devices simultaneously allowing you to build a full wireless control solution!



3D VISUALIZER

Build your show in 3D. Visualize light beams, colors, gobos and beam effects. Easy View 3D allows you to import and position lighting fixtures and objects. The real-time rendering engine allows for programming to be made away from the stage, or to impress clients with 3D videos and 2D plot prints.

